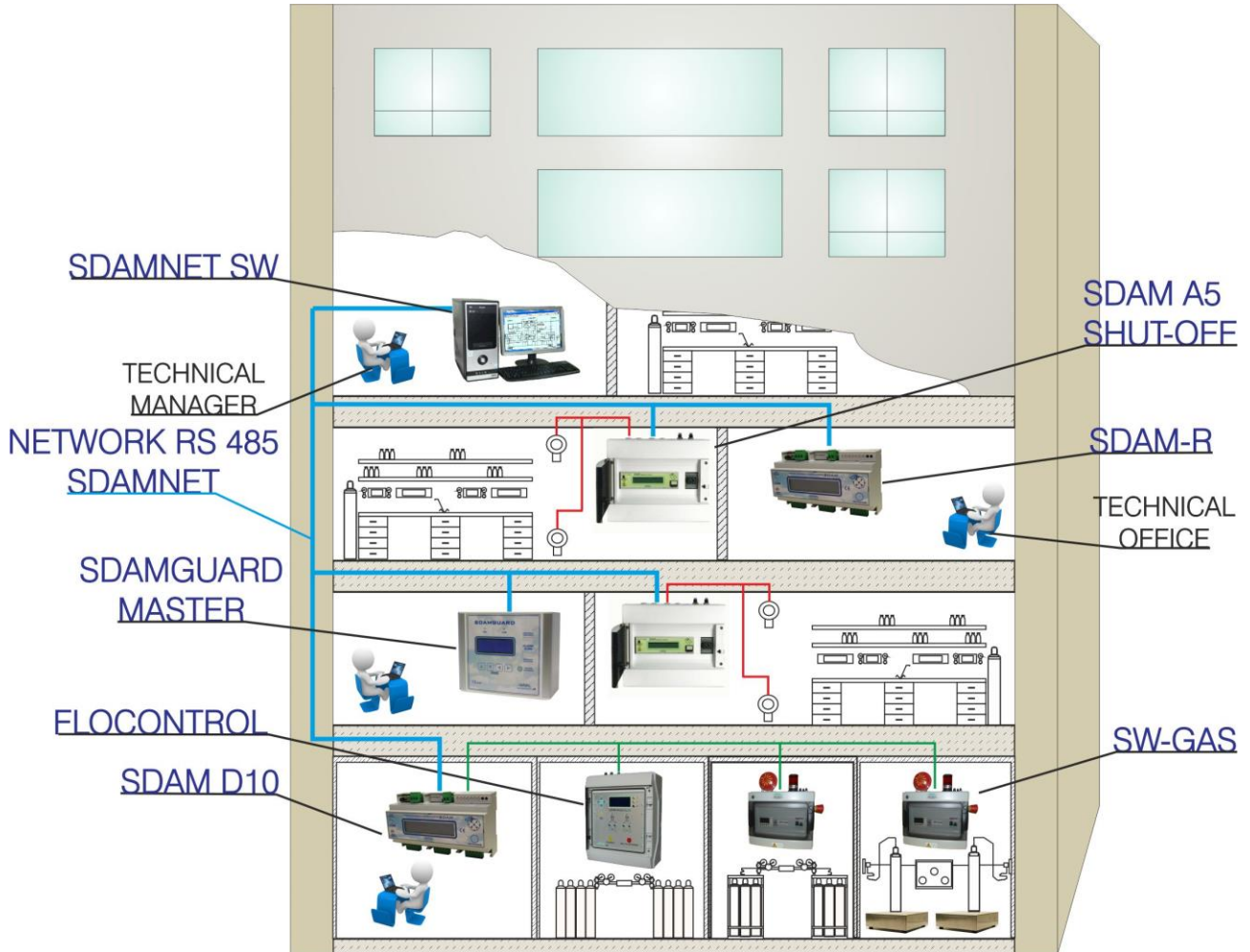


SDAMNet

Alarms and measurements monitoring system on local network



This system solves all the gas storage problems about alarm signals, especially in cylinder areas and supply gas environment. It monitors and transfers the alarm status to the office of competence.

This system is composed by:

- SDAM L4 (no RS485)** 4 digital inputs for ON/OFF sensors (min. / max. pressure switches);
- SDAM Repeater with LED** Repeater of alarm status for SDAM L4 units;
- DIGI4CONTROL** 4 digital inputs for ON/OFF sensors (min. / max. pressure switches and/or NAMUR contacts);
- SDAM A5** 5 analogue inputs for 4-20 mA pressure transducer;
- SDAM D10** 10 digital inputs for ON/OFF sensors (min. / max. pressure switches and/or NAMUR contacts);
- SDAM Shut-off A5** 5 analogue 4-20mA inputs and gas supply control (see chapter Control Process);
- SDAM Shut-off D10** 10 digital inputs ON/OFF and gas supply control (see chapter Control Process);
- SDAM R** Repeater for SDAM D10, SDAM A5 , SDAM Shut-off D10 and SDAM Shut-off A5 in the network RS485.

SDAM D10/ SDAM A5/ SDAM D10 Shut-off/ SDAM A5 Shut-off units are programmed by a P.C.; it is possible to set the digital and the analogue inputs parameters, as: input identifications, contact types (for digital inputs only), ranges of measurement and alarm thresholds (for analogue inputs only), alarm priority, output relay configuration and identification area.

SDAM units are supplied for wall or flush mounting.

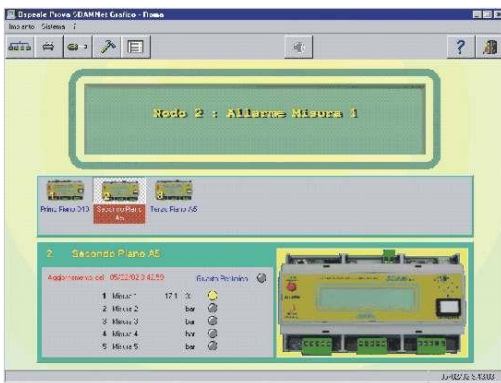
The units can be connected by the **SDAMNet** local network (RS485) to one or more **SDAMGUARD** unit and/ or to a P.C. to create a central monitoring guard station.

*Note: this function is not available for **SDAM L4**.*

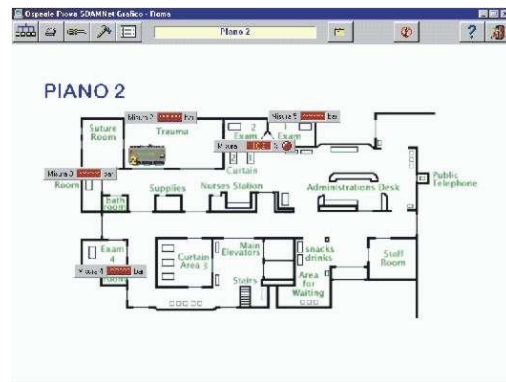
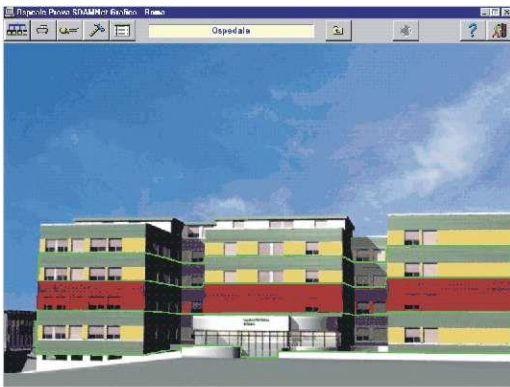
On the P.C. shall be installed the monitoring software **SDAMNet SW**; with the software licence is supplied the interface converter USB/RS485 for the connection of P.C. to the RS485 local network.

Two different versions of the software are available:

- **SDAMNet_Lite SW** base monitoring software



- **SDAMNet SW** Graphic monitoring software



Both versions have the following functions:

- Cyclic monitoring of SDAM peripherals surveying alarms, faults and measurements;
- Acoustic and visual signals notifying alarms;
- Memory of events, measurements and faults;
- Network SDAM peripherals programming;
- Statistic elaborations of alarms;
- Statistic elaborations of measurements;
- Possibility to send SMS to external operators.

SDAMNet local network can be connected to a MODBUS network by a transcoding module, like **A2M Converter**.