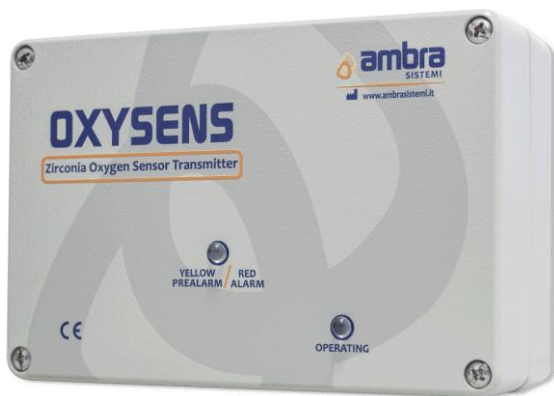


# OXYSENS

## FUNCTIONS

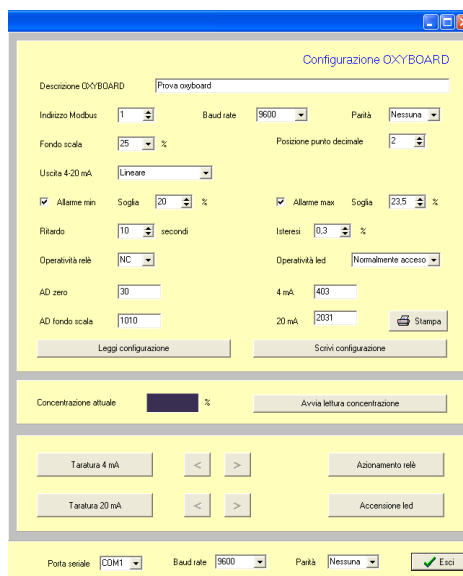


Oxygen gas sensor with Zirconia oxide cell

Typical application:

- O<sub>2</sub> monitoring in gas cylinder storage area
- O<sub>2</sub> monitoring in cryobiology, laboratory and hospital applications

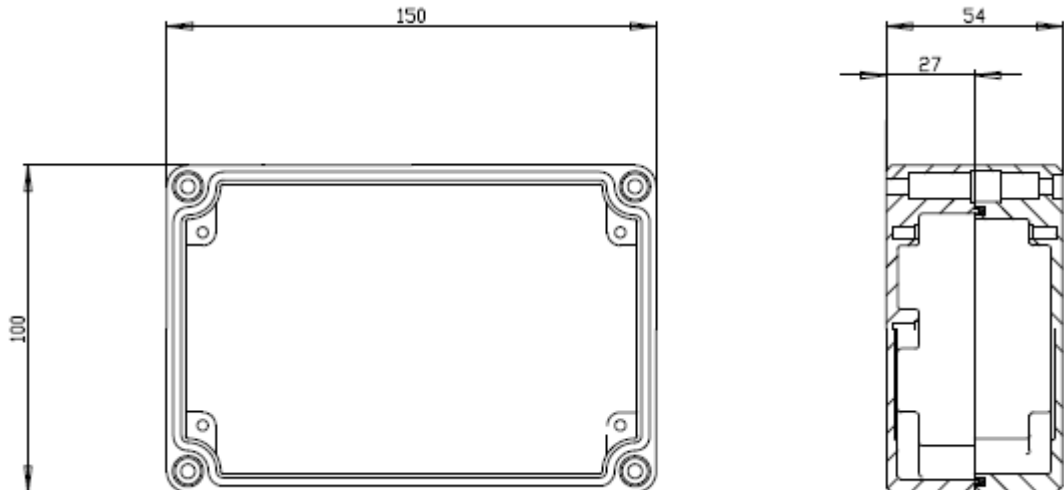
- 4-20mA linear output signal
- Network interface RS485 or RS232 with ModBus protocol
- Setpoint (min./max.) with relay output contact; thresholds, delay and hysteresis programmable by specific software



## TECHNICAL SPECIFICATION

<b>Power supply</b>	24 Vcc, Pmax. 5 VA, fuse 0,5 A
<b>Measuring range</b>	0...25%, 0...95% Vol O <sub>2</sub>
<b>Visual indications</b>	Unit status: green LED Ø 5 mm: Fast blinking: Warm-up Low blinking: In function
<b>Output 4...20 mA</b>	Active linear output signal, maximum load 1KOhm
<b>Relay outputs</b>	N.O and N.C., output switch Vmax.=30 Vdc/ 220Vac; I <sub>max</sub> = 5A
<b>Response time</b>	<30 sec. from 0 to 99% of F.S.
<b>Warm-up time</b>	3 minutes with output signal 4mA
<b>Combined error</b>	< ±1 % of F.S. – full range
<b>Atmospheric Pressure drift</b>	Irrelevant (include in the combined error)
<b>Long term drift</b>	<2% of F.S. over 5 years
<b>Expected lifetime</b>	Sensor not subject to exhaustion
<b>Housing</b>	Metallic box IP30, for wall mounting Dim. 150x100x(p)54mm
<b>Serial output</b>	RS485 or RS232 bidirectional with ModBus protocol
<b>Weight</b>	680 gr.
<b>Operating temperature</b>	5...60°C
<b>Reference standard and directives</b>	CE

# OUTLINE



# ORDERING INFORMATION

Codice	Descrizione
0005-02-021	<b>OXYSENS 0...25%:</b> Oxygen gas sensor with zirconia oxide cell range 0...25% Vol O <sub>2</sub> , serial interface RS485 ModBus
0005-02-022	<b>OXYSENS 0...25%:</b> Oxygen gas sensor with zirconia oxide cell range 0...25% Vol O <sub>2</sub> , serial interface RS232 ModBus
0005-02-023	<b>OXYSENS 0...95%:</b> Oxygen gas sensor with zirconia oxide cell range 0...25% Vol O <sub>2</sub> , serial interface RS485 ModBus
0005-02-024	<b>OXYSENS 0...95%:</b> Oxygen gas sensor with zirconia oxide cell range 0...25% Vol O <sub>2</sub> , serial interface RS232 ModBus